

MONTHLY MEMBERSHIP PROGRESS REPORT

District 19 O

Results as of: 4/30/2025

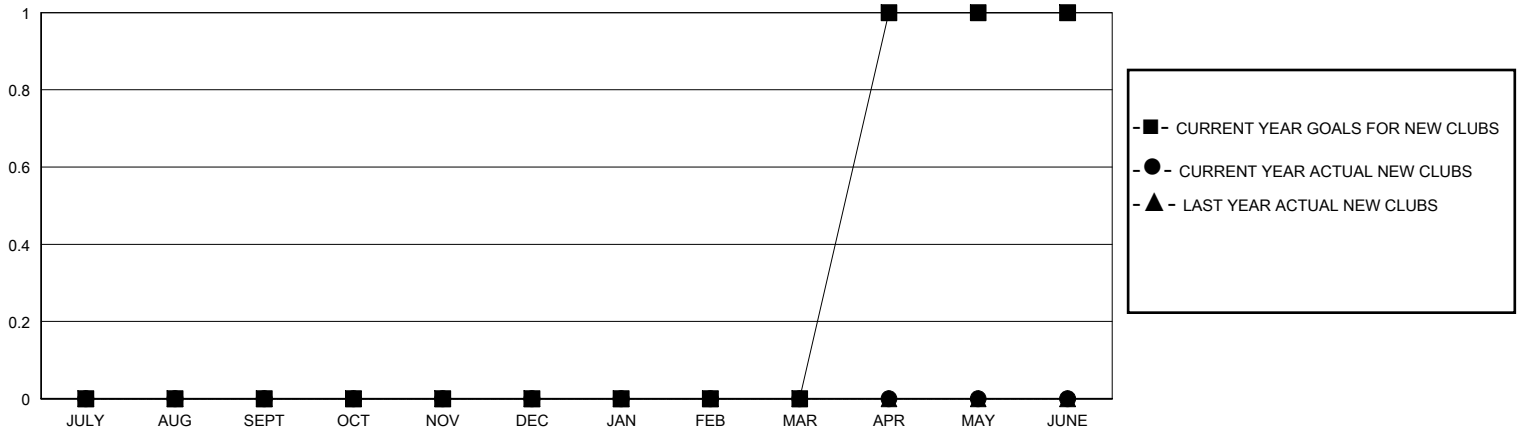
GMT:

LOCATION BRITISH COLUMBIA

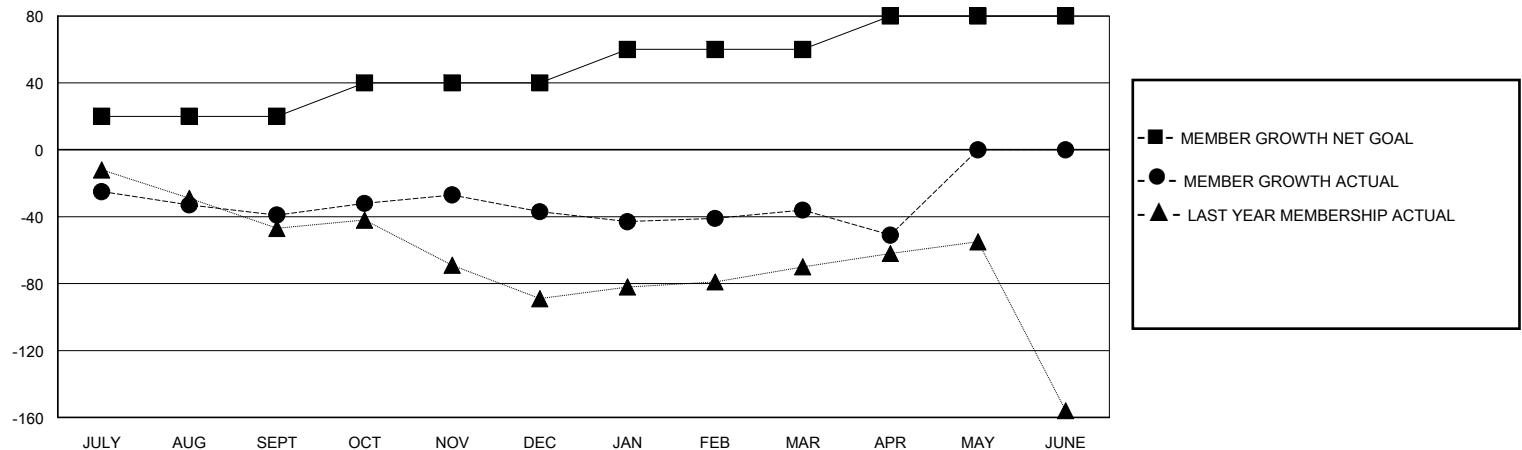
GMT CA

| Clubs | | | | Members | | | |
|-----------------------|---------------|-----------|---------------|-----------------------|------------------------|----------------------|--|
| RESULTS FOR 2024-2025 | | | | RESULTS FOR 2024-2025 | | | |
| QUARTER | NEW CLUB GOAL | NEW CLUBS | DROPPED CLUBS | QUARTER | MEMBER GROWTH NET GOAL | MEMBER GROWTH ACTUAL | DROPPED MEMBERS ACTUAL (including transfers) |
| JULY/AUG/SEPT | 0 | 0 | 0 | JULY/AUG/SEPT | 20 | 59 | 79 |
| OCT/NOV/DEC | 0 | 0 | 1 | OCT/NOV/DEC | 20 | 61 | 39 |
| JAN/FEB/MAR | 0 | 0 | 0 | JAN/FEB/MAR | 20 | 63 | 57 |
| APR/MAY/JUNE | 1 | 0 | 1 | APR/MAY/JUNE | 20 | 26 | 25 |

GOALS AND ACTUAL NEW CLUBS CUMULATIVE



GOALS AND ACTUAL MEMBERS CUMULATIVE



DROPPED CLUBS: 2

37 CLUBS OF 63 ADDED 1 OR MORE NEW MEMBERS

GENDER DISTRIBUTION

MALE 974 (56.99%)
FEMALE 732 (42.83%)

DROPPED MEMBERS

| | |
|----------------|------------|
| DECEASED | 30 |
| CLUB CANCELLED | 0 |
| OTHER | 171 |
| TOTAL | 201 |

[CLICK HERE FOR CUMULATIVE MEMBERSHIP DATA](#)

| | |
|---------------------------------|---|
| TOTAL FAMILY UNIT MEMBERS | 0 |
| FAMILY MEMBERS PAYING HALF DUES | 0 |